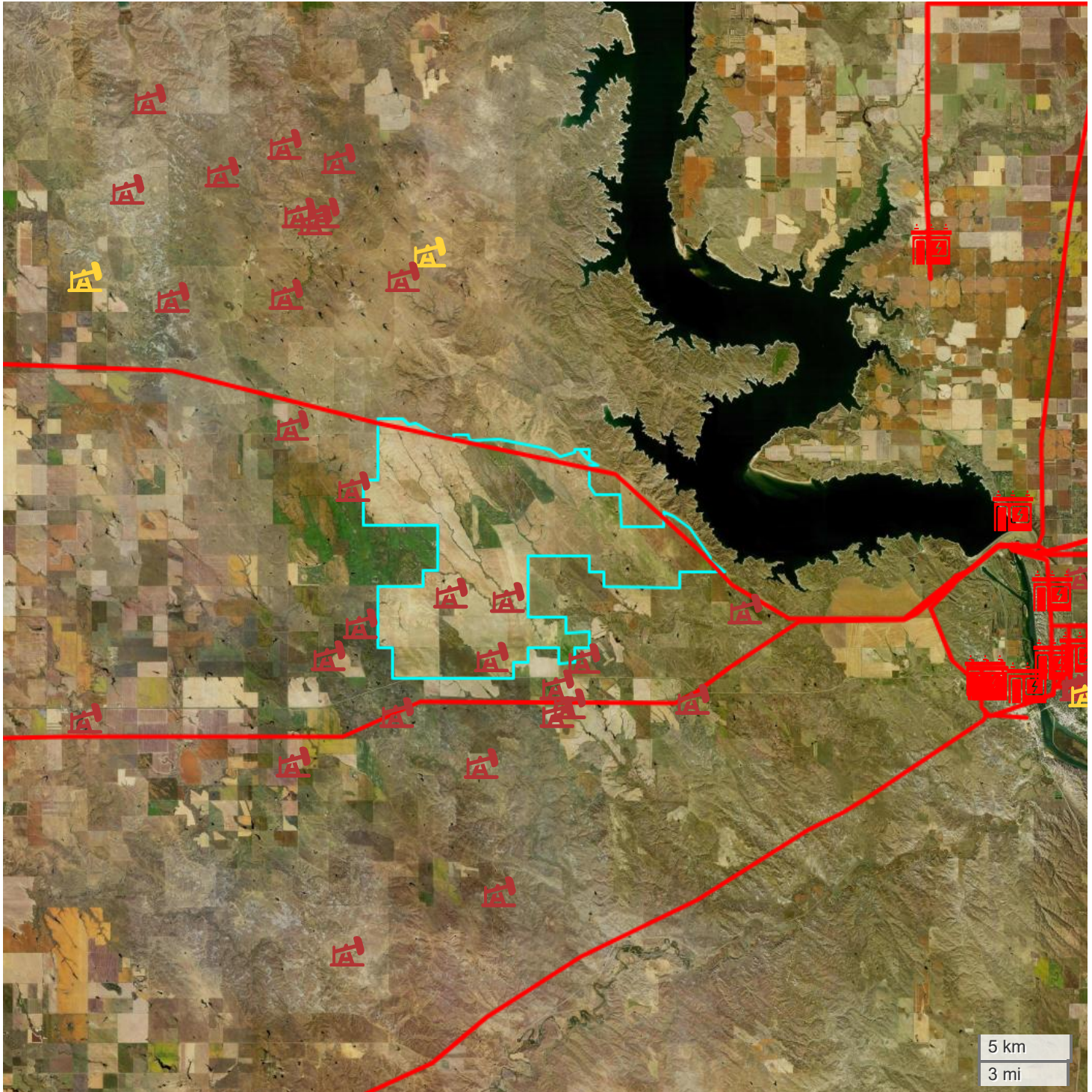




GUNSMOKE FARM (34049.98 AC TOTAL, 28789.70 AC TILLABLE)








ENERGY MAP



5 km
3 mi



FarmWorth, LLC makes no warranties, express or implied, regarding the accuracy of any information provided through FarmWorth.com. User is solely responsible for independently verifying all information prior to use and waives any claims against FarmWorth, LLC arising from inaccuracies in such information.

-  Transmission Lines
-  Substations
-  Wind Turbine
-  Wind Farm
-  Solar
-  Oil and Gas (Active)
-  Oil and Gas (Abandoned)